

CRIMPWELL
S E R V I C E S

Since 1994

**HYDRAULIC TORQUE
WRENCH CATALOG**

A Tough Job doneEffortlessly !!!

CRIMPWELL

S E R V I C E S



*Professional manufacturer of
hydraulic bolting tools*



CRIMPWELL

S E R V I C E S

Improving Production

Technology Innovation



Advanced processing equipment

- Rigorous design concept
- Precision machining equipment
- Advanced production technology

Mass production, adequate inventory

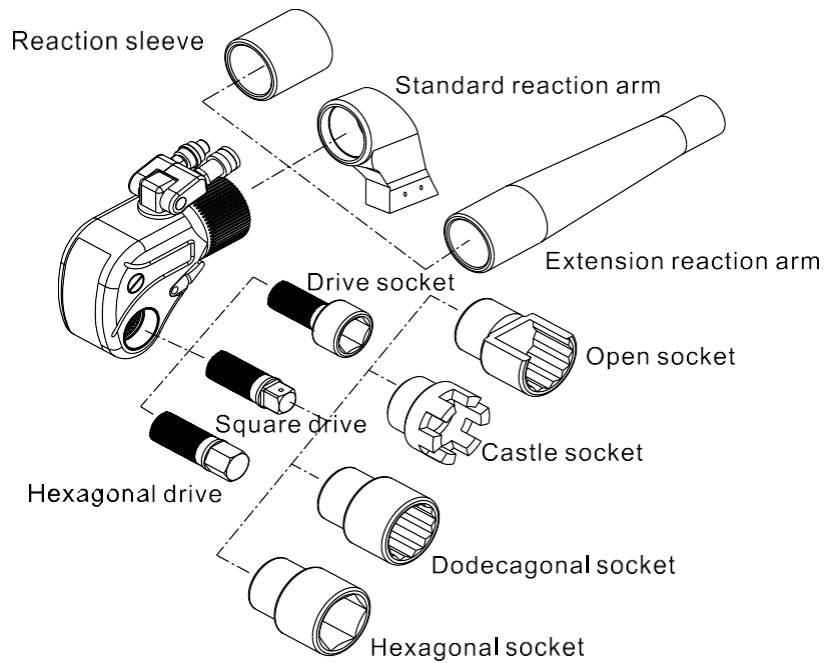


CSMXTD series

CSMXTD series - Square drive hydraulic torque wrench

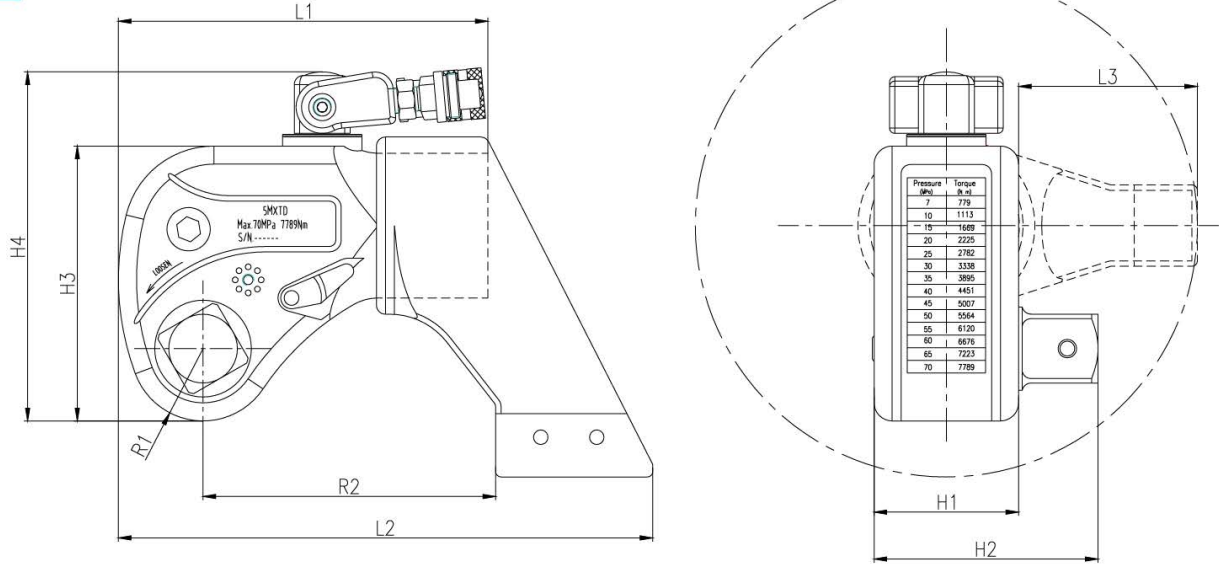


- 70MPa max working pressure
- Torque accuracy up to $\pm 3\%$
- 12 models from 185Nm-150000Nm
- 360X180 degree swivel joint, no space limitation
- 360- degree reaction arm
- Al-Ti alloy material, integrated design
- Square drive and reaction arm can be customized.



CSMXTD series

Dimension



Technical parameters

Model	CS1MXTD	CS3MXTD	CS5MXTD	CS8MXTD	CS10MXTD	CS15MXTD	CS20MXTD	CS25MXTD	CS35MXTD	CS45MXTD	CS50MXTD	CS95MXTD
Torque (Nm)	185 1852	436 4364	779 7789	1072 10715	1553 15528	2050 20501	2617 26171	3493 34928	4963 49627	5912 59123	7032 70315	14085 140848
Weight (Kg)	2.7	4.8	8.8	12	14.5	19	25	37.5	44	63	89	220
L1 (mm)	138	168	207	226	250	281	304	331	390	412	418	520
L2 (mm)	194	244	296	326	366	402	442	483	558	570	596	758
L3 (mm)	63	79	99	110	120	132	146	158	177	188	195	246
H1 (mm)	50	70	80	90	100	112	120	138	150	163	166	210
H2 (mm)	73	99	124	133	146	165	183	202	219	229	236	307
H3 (mm)	96	125	152	170	186	208	226	250	282	288	300	415
H4 (mm)	140	165	193	211	227	249	267	291	323	332	366	473
R1 (mm)	26	34	40	46	50	56	60	66	77	80	82	115
R2 (mm)	107	132	162	178	199	218	240	260	298	303	325	400
Square Drive	3/4"	1"	1 1/2"	1 1/2"	1 1/2"	2"	2 1/2"	2 1/2"	2 1/2"	2 1/2"	3"	4"

CSWHCD series

CSWHCD series - Low profile hydraulic torque wrench

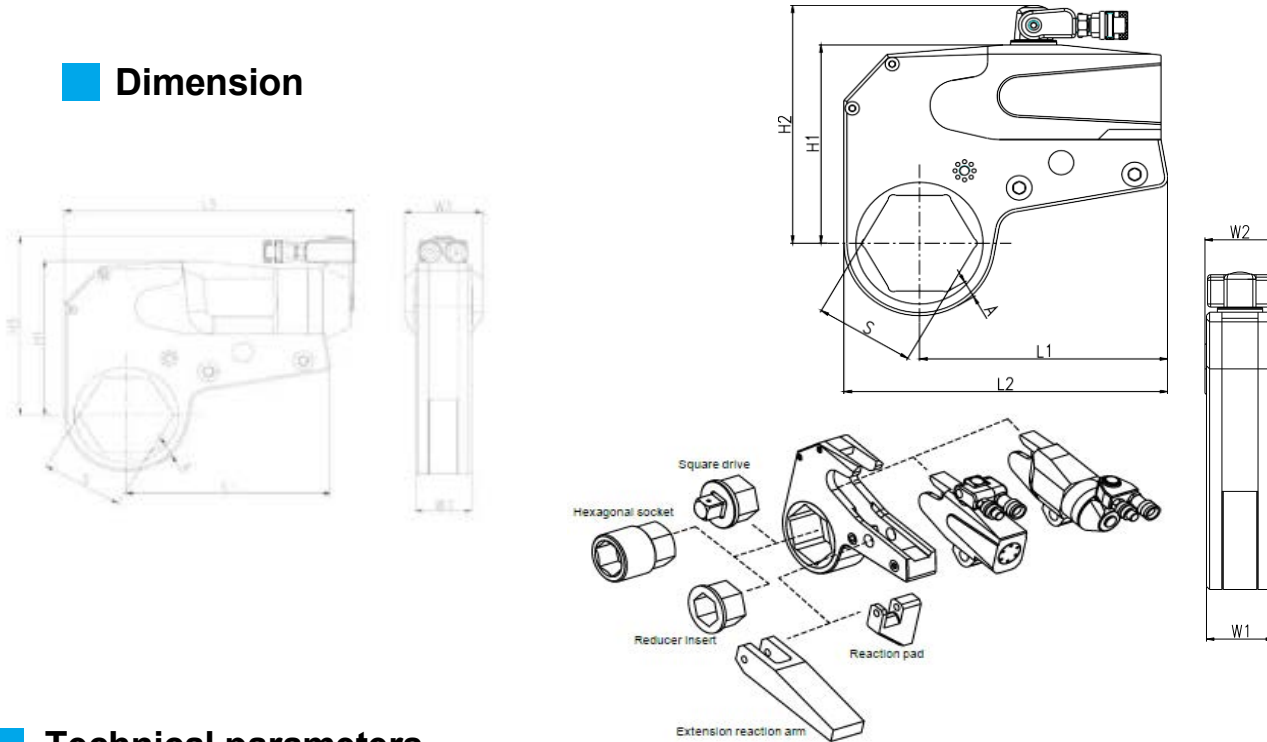


- 70 MPa max working pressure.
- Torque repeatability up to 3%.
- 10 models with the ranges from 233-140000 Nm.
- 360x180 degree swivel joints allow free operation without space limitation.
- Al-Ti alloy material, integral design, longer reaction arm and higher reliability.
- Light weight.
- Working head can be changed.



CSWHCD series

Dimension



Technical parameters

Model	CS1WHCD	CS3WHCD	CS4WHCD	CS6WHCD	CS8WHCD	CS15WHCD	CS25WHCD	CS35WHCD	CS50WHCD	CS95WHCD
Torque (Nm)	233 2326	345 3446	540 5399	769 7691	1212 12116	1992 19919	3363 33629	5385 53851	7522 75221	13946 139463
A/F (mm)	36-60	41-60	46-80	55-85	70-105	80-115	90-130	120-145	130-180	155-190
Weight (kg)	2.1	3.7	4.5	7.5	8.9	17.3	25.2	35.5	47.8	204
L1 (mm)	120.5	144	156	179	207	237	273	338	382	492
L2 (mm)	156	185	202	232	270	309	361	447	517	665
L3 (mm)	191	223	232	256	291	335	383	456	539	670
H1 (mm)	100	113	119	145	168	197	230	280	320	400
H2 (mm)	144.5	156	161	187	210	237	272	345	383	458
H3 (mm)	142	148	152	179	200	227	255	294	400	425
W1 (mm)	34	36	42	45	53	64	70	84	94	160
W2 (mm)	36	38	46	49	57	68	79	92	102	168
W3 (mm)	50	55	60	65	75	90	100	118	140	180
A (mm)	8.3	9.5	11.7	12.8	14.2	18.2	21.3	24.8	30.5	61.7

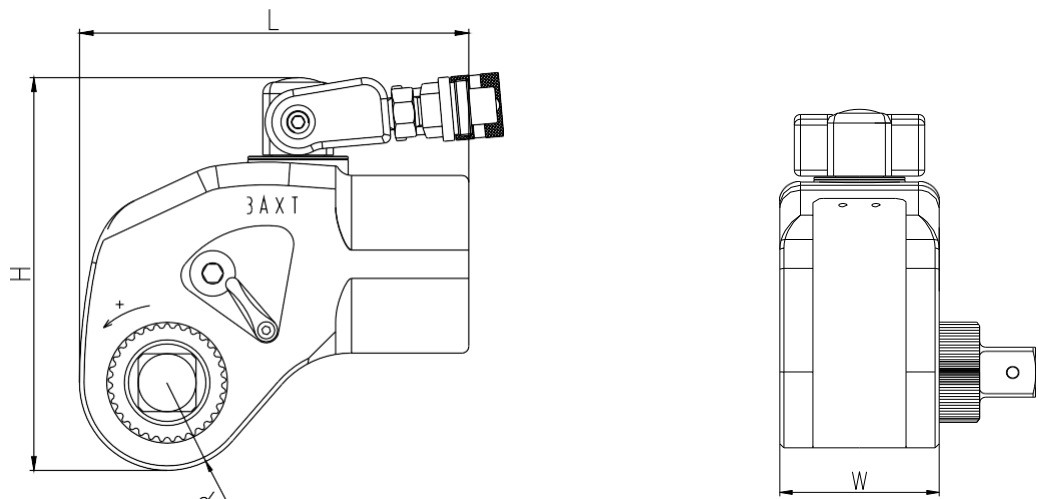
CSAXT series

CSAXT series - Front square drive hydraulic torque wrench



- 70MPa max working pressure
- Torque repeatability up to $\pm 1\%$
- Front reaction arm, smaller longitudinal size, more suitable for narrow space.
- Reaction arm and square drive are coaxial, better adaptability.
- Wide ranges from 179-19000Nm.
- 360 degree swivel joint, free operation, no space limitation.
- Al-Ti alloy material, high strength
- Reaction arm can be customized.

Dimension

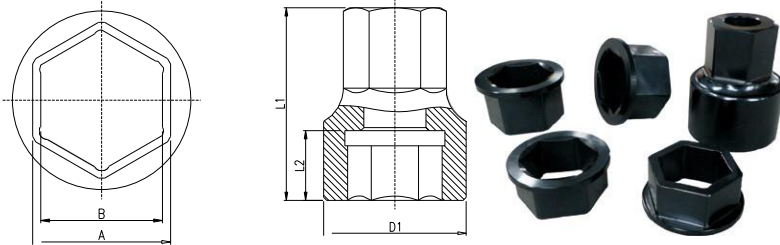


Technical parameters

Model	CS1AXT	CS3AXT	CS5AXT	CS8AXT	CS10AXT	CS15AXT
Torque (Nm)	179 1788	406 4062	733 7325	1003 10033	1513 15133	1904 19041
Precision	+/-3%	+/-3%	+/-3%	+/-3%	+/-3%	+/-3%
Weight (Kg)	2.4	5.1	8.4	10.3	14.6	17.8
R (mm)	29.5	38.5	47.5	54.5	62.5	64.5
L (mm)	133	171	210	238	266	296
H (mm)	135	172	205	232	253	255
W (mm)	57	77	88	100	111	120
Square Drive	3/4"	1"	1 1/2"	1 1/2"	1 1/2"	2"

ACCESSORIES

Reducers for low profile torque wrench

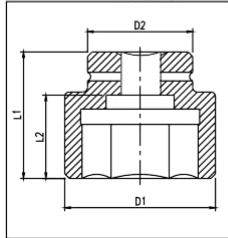


- Made of high strength Cr Mo alloy steel.
- Pass standard heat treatment process, making the socket safe, reliable and durable.
- KLCD series sockets can also be used for WHCD series.
- Non- standard sockets can be customized.

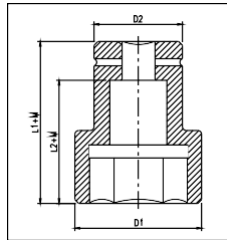
Wrench model	Working head type	A/F	Specifications of variable sockets							
			Model	A/B	Model	A/B	Model	A/B	Model	A/B
CS3KLCD	CS3KLCD-36	S=36	3K3630	36/30	3K3627	36/27	3K3624	36/24		
	CS3KLCD-41	S=41	3K4136	41/36	3K4134	41/34	3K4130	41/30	3K4127	41/27
	CS3KLCD-46	S=46	3K4641	46/41	3K4636	46/36	3K4634	46/34	3K4630	46/30
	CS3KLCD-50	S=50	3K5046	50/46	3K5041	50/41	3K5036	50/36	3K5034	50/34
	CS3KLCD-55	S=55	3K5550	55/50	3K5546	55/46	3K5541	55/41	3K5536	55/36
CS4KLCD	CS4KLCD-60	S=60	3K6055	60/55	3K6050	60/50	3K6046	60/46	3K6041	60/41
	CS4KLCD-46	S=46	4K4641	46/41	4K4636	46/36	4K4634	46/34		
	CS4KLCD-50	S=50	4K5041	50/41	4K5036	50/36	4K5034	50/34		
	CS4KLCD-55	S=55	4K5546	55/46	4K5541	55/41	4K5536	55/36	4K5534	55/34
	CS4KLCD-60	S=60	4K6050	60/50	4K6046	60/46	4K6041	60/41	4K6036	60/36
	CS4KLCD-65	S=65	4K6555	65/55	4K6550	65/50	4K6546	65/46	4K6541	65/41
	CS4KLCD-70	S=70	4K7060	70/60	4K7055	70/55	4K7050	70/50	4K7046	70/46
	CS4KLCD-75	S=75	4K7565	75/65	4K7560	75/60	4K7555	75/55	4K7550	75/50
CS8KLCD	CS8KLCD-80	S=80	4K8070	80/70	4K8065	80/65	4K8060	80/60	4K8055	80/55
	CS8KLCD-75	S=75	8K7565	75/65	8K7560	75/60	8K7555	75/55	8K7550	75/50
	CS8KLCD-80	S=80	8K8070	80/70	8K8065	80/65	8K8060	80/60	8K8055	80/55
	CS8KLCD-85	S=85	8K8575	85/75	8K8570	85/70	8K8565	85/65	8K8560	85/60
	CS8KLCD-90	S=90	8K9080	90/80	8K9075	90/75	8K9070	90/70	8K9065	90/65
	CS8KLCD-95	S=95	8K9585	95/85	8K9580	95/80	8K9575	95/75	8K9570	95/70
	CS8KLCD-100	S=100	8K10090	100/90	8K10085	100/85	8K10080	100/80	8K10075	100/75
	CS8KLCD-105	S=105	8K10595	105/95	8K10590	105/90	8K10585	105/85	8K10580	105/80
CS14KLCD	CS14KLCD-85	S=85	14K8575	85/75	14K8570	85/70	14K8565	85/65	14K8560	85/60
	CS14KLCD-90	S=90	14K9080	90/80	14K9075	90/75	14K9070	90/70	14K9065	90/65
	CS14KLCD-95	S=95	14K9585	95/85	14K9580	95/80	14K9575	95/75	14K9570	95/70
	CS14KLCD-100	S=100	14K10090	100/90	14K10085	100/85	14K10080	100/80	14K10075	100/75
	CS14KLCD-105	S=105	14K10595	105/95	14K10590	105/90	14K10585	105/85	14K10580	105/80
	CS14KLCD-110	S=110	14K110100	110/100	14K11095	110/95	14K11090	110/90	14K11085	110/85
	CS14KLCD-115	S=115	14K115105	115/105	14K115100	115/100	14K11595	115/95	14K11590	115/90
	CS14KLCD-120	S=120	14K120110	120/110	14K120105	120/105	14K120100	120/100	14K12095	120/95
CS18KLCD	CS18KLCD-85	S=85	18K8575	85/75	18K8570	85/70	18K8565	85/65		
	CS18KLCD-90	S=90	18K9080	90/80	18K9075	90/75	18K9070	90/70	18K9065	90/65
	CS18KLCD-95	S=95	16K9585	95/85	16K9580	95/80	16K9575	95/75	16K9570	95/70
	CS18KLCD-100	S=100	18K10090	100/90	18K10085	100/85	18K10080	100/80	18K10075	100/75
	CS18KLCD-105	S=105	18K10595	105/95	18K10590	105/90	18K10585	105/85	18K10580	105/80
	CS18KLCD-110	S=110	18K110100	110/100	18K11095	110/95	18K11090	110/90	18K11085	110/85
	CS18KLCD-115	S=115	18K115105	115/105	18K115100	115/100	18K11595	115/95	18K11590	115/90
	CS18KLCD-120	S=120	18K120110	120/110	18K120105	120/105	18K120100	120/100	18K12095	120/95

A Tough Job doneEffortlessly !!!

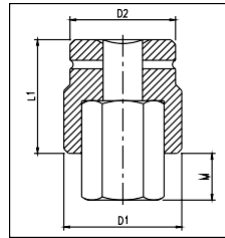
Sockets for square drive torque wrench



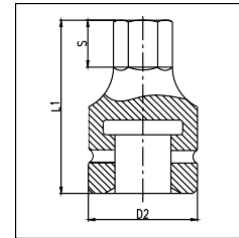
Single cap socket



Double cap socket



Outer hexagonal socket LFB



Outer hexagonal socket F

- Made of high strength Cr Mo alloy steel.
 - Pass standard heat treatment process, making the socket safe, reliable and durable.
 - Non-standard sockets can be customized.
- Heavy duty socket standard DIN3121/3129.

Bolt specification		3/4" (19×19)				1" (25.4×25.4)				1 1/2" (38×38)				2" (51×51)				2-1/2" (64×64)			
Diameter	A/F	D1	D2	L1	L2	D1	D2	L1	L2	D1	D2	L1	L2	D1	D2	L1	L2	D1	D2	L1	L2
M16	24	42	42	50	27																
M20	30	48	44	54	31																
M22	34	52	44	54	31	52	52	58	30												
M24	36	54	44	57	34	55	55	61	33	74	74	76	34								
M27	41	60	44	60	37	63	55	64	36	74	74	79	37								
M30	46	66	44	68	45	70	58	68	40	74	74	82	40								
M33	50	71	44	70	47	75	64	71	43	81	81	85	43								
M36	55					81	66	76	48	87	87	90	48	100	100	97	48	115	115	118	54
M39	60					87	66	79	51	87	87	93	51	103	103	100	51	115	115	118	54
M42	65					92	68	82	54	97	87	96	54	105	105	104	54	120	120	118	54
M45	70					97	75	85	57	102	87	99	57	112	112	107	57	120	120	121	57
M48	75					102	75	91	63	112	87	105	63	119	119	113	63	128	128	127	63
M52	80					108	75	95	67	118	95	109	67	123	123	117	67	130	130	131	67
M56	85					116	78	99	71	123	95	114	72	127	127	122	72	132	132	136	72
M60	90									128	98	118	76	132	115	126	76	139	139	140	76
M64	95									133	98	124	82	138	115	132	82	145	145	145	82
M68	100									139	102	128	86	138	115	136	86	153	142	150	86
M72	105									145	102	132	90	148	115	140	90	160	142	154	90
M76	110									150	105	136	94	154	120	146	96	166	142	160	96
M80	115									155	110	150	105	159	120	150	100	173	142	164	100
M85	120													165	125	155	105	180	142	169	105
M90	130													177	125	160	110	190	160	174	110
M95	135													182	130	165	115	195	160	179	115
M100	145													194	135	175	125	210	160	189	125
M105	150																	215	170	200	130
M110	155																	223	170	210	135
M115	165																	230	170	220	140
M120	175																	240	170	235	155

The chart of max recommended torque for bolts

Strength grade		4.8		6.8		8.8		10.9		12.9	
Min breaking strength		400MPa		600MPa		800MPa		1000MPa		1200MPa	
Material		General structural steel		Mechanical construction steel		Chrome molybdenum alloy steel		Ni-Cr-Mo alloy steel		Ni-Cr-Mo alloy steel	
Bolt	A/F	Torque value		Torque value				Torque value		Torque value	
M	S	KGM	NM	KGM	NM	KGM	NM	KGM	NM	KGM	NM
16	24	9	87	13	131	18	174	25	245	30	294
18	27	13	128	20	192	26	256	37	360	44	432
20	30	17	170	26	256	35	341	49	479	59	575
22	34	24	232	36	348	47	465	69	653	80	784
24	36	30	294	45	442	60	589	84	828	101	994
27	41	44	432	66	647	88	863	124	1214	149	1457
30	46	60	585	89	877	119	1171	168	1646	201	1975
33	50	81	796	122	1195	162	1593	228	2240	274	2688
36	55	104	1023	157	1535	209	2046	294	2878	352	3453
39	60	135	1324	203	1986	270	2649	380	3725	456	4469
42	65	167	1638	251	2457	334	3277	470	4608	564	5529
45	70	209	2045	313	3068	417	4090	587	5752	704	6903
48	75	251	2461	376	3691	502	4921	706	6921	847	8305
52	80	325	3181	487	4771	649	6362	913	8946	1095	10736
56	85	404	3956	605	5934	807	7912	1135	11127	1362	13352
60	90	504	4932	755	7398	1006	9864	1415	13871	1698	16645
64	95	608	5960	912	8940	1216	11920	1710	16762	2052	20115
68	100	738	7230	1107	10845	1475	14460	2075	20335	2450	24401
72	105	885	8669	1327	13003	1769	17337	2488	24381	2985	29257
76	110	1050	10287	1574	15430	2099	20573	2952	28931		34717
80	115	1234	12094	1851	18141	2468	24188	3471	34014		40815
85	120	1493	14636	2240	21953	2987	29271		41163		49395
90	130	1787	17510	2680	26266	3573	35021		49248		59098
100	145	2484	24341	3726	36512		48683		68460		82152
110	155	3342	32751		49126		65501		92111		110533
120	175	4378	42902		64354		85805		120663		144795
125	180		48683		73024		97366		136920		164304

Attention:

The data in the chart is measured under 60% yield limit of the bolt, the recommended tightening torque is 70-80% of above data.

For example, for M52 grade 8.8 bolt, the tightening torque is $6362 \times (70-80)\% = 4453-5090\text{Nm}$.

The loosening torque should be 1.5-2.5 times of tightening torque.

HYDRAULIC POWER PACK



3 Speed Hydraulic Wrench Pump Feature

1. High efficiency 3 speed flow pressure design, perfect simulation of manual operation, fast speed when light load, low speed when heavy load, the bolt tightening is more precise.
2. It can drive 2 hydraulic wrenches simultaneously or 4 if requested.
3. Al-Ti alloy pump body, light weight and easy to carry.
4. 40-700 bar adjustable output pressure.
5. Brushless high-power motor, easy maintenance and long life, with starting capacitor, able to start with load, simple operation.
6. High performance radiator, the fan starts automatically when oil temperature reaches 35 degrees.

3 Speed Hydraulic Wrench Pump Technical Specifications:

Products Name	Model	Output Port	Power	Pressure (MPa)			Flow (L/Min)			Oil Tank	Dimension (mm)	Weight (Kgs)
				High	Medium	Low	High	Medium	Low			
3 Speed Hydraulic Wrench Pump (include 6m hose and connector)	CSEMP304-2	4 x 1/4 NPT	220V 1.1KW	70	32	6	0.9	1.6	8.6	8L	394*300* 420	27

PNEUMATIC POWER PACK



MODEL NO.- CSQMP304
























Pneumatic Power Pack Parameters:

1. Air Pressure : 4-8 bar, rated power- 1.3kw, 134 m³/h air consumption
2. Working pressure: 70-32-6MPa
3. Flow: 3 Stage, 0.8L/min@70MPa, 1.6L/min@32MPa, 8L/min@6MPa
4. Oil tank: 7.6L
5. Dimension: 428*281*448mm
6. Weight: 21.5 kg.

A Tough Job done Effortlessly !!!

Do's & Don'ts

Do's & Dont's

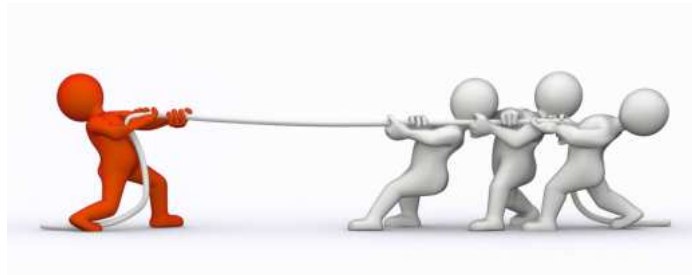
- | | | |
|---|---|---|
|  |    |  |
| | <p>Use Safety Goggles, Wear Shoes & Gloves While Working.</p> | |
|  | <p>Always Use Flat & Solid Surface For Hydraulic Equipment.</p> |  |
|  | <p>Never Exceed Rated Capacity & Stroke Of The System. It Is Recommended To Use A Pressure Gauge.</p> |  |
|  | <p>When Not In Use Keep The Hydraulic System In Clean Environment.</p> |  |
|  | <p>Never Attempt To Do The Maintenance Of The Hydraulic System Which Is Under Loaded Condition.</p> |  |
|  | <p>Avoid Sharp Bending Of Hose. When A Heavy Object Has Dropped On The Hose, Make Sure That It Is Re-certified Before Use</p> |  |
|  | <p>Always Clean The Quick Connect Couplers Before Reconnecting.</p> |  |
|  | <p>Avoid Standing Or Working Under Loaded Hydraulic System.</p> |  |
|  | <p>Never Expose The Hydraulic System To Intense Heat. This May Cause Damage To The Seals And O Rings In The System.</p> |  |
|  | <p>Avoid Eccentric Loading. Off Center Loads Produce Considerable Strain On The Cylinders And Plungers. This May Cause The Load To Slip Or Fall Causing Dangerous Accidents.</p> |  |

TIPS ON MAINTENANCE

- Hose,Pump should be cleaned properly and kept out of Dirt and Grit.
- To remove oil, dust & grease do not use jute, apply only dry cloth.
- Only use high quality hydraulic oil.
- Do not drag the pump with operating handle or with hose.
- A case is provided for safety, security & transportation of the equipment.
- If the machine is not working do not open, contact manufacturer for necessary back up.

CAUTION:

Distance should be maintained while operating and avoid standing in front while applying force. Manufacturer is not liable for nay accident / damages loss of life caused due misuse of the equipment.



MARKETED AND SERVICED BY:

CRIMPWELL SERVICES

UNIT NO. 1407, 12TH FLOOR, SIDDHA
ESPLANADE, 6 JAWAHARLAL NEHRU
RD. KOLKATA-700013 PH: 9674882242
EMAIL:crimpwellservices@gmail.com

THE COMPANY IN KEEPING WITH ITS POLICY OF CONTINUOUS PRODUCT DEVELOPMENT RESERVES THE RIGHT TO MODIFY/CHANGE THE DESIGN S/SPECIFICATION WITHOUT PRIOR NOTICE.

A Tough Job doneEffortlessly !!!